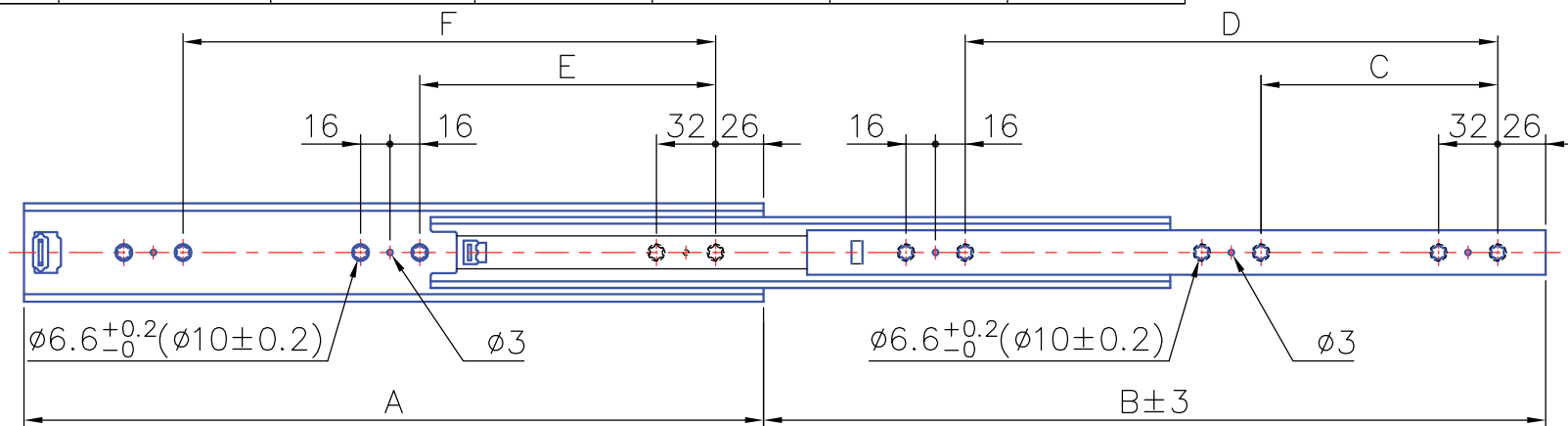
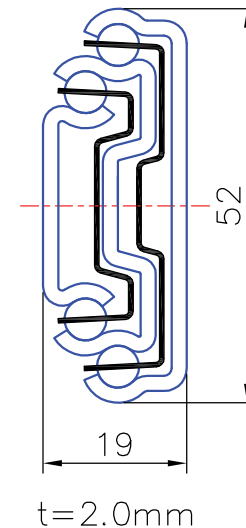
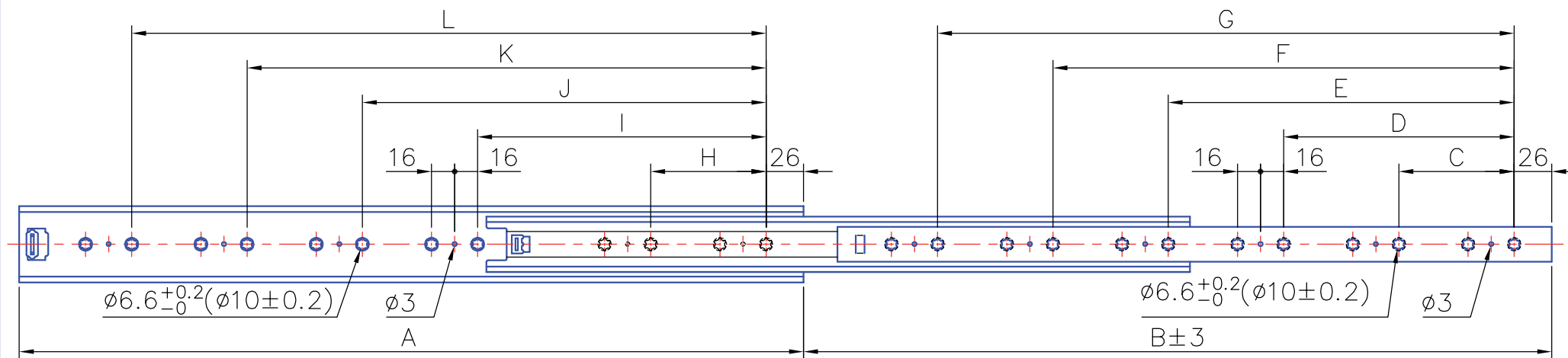
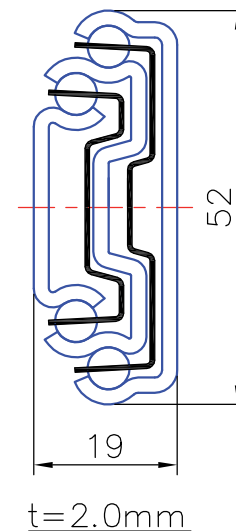


Item No.	Slide Length A (mm)	Slide Travel B (mm)	C(mm)	D(mm)	E(mm)	F(mm)
HS 5319 - 250	250	272	144	—	160	—
HS 5319 - 300	300	323	192	—	192	—
HS 5319 - 350	350	373	224	—	224	—
HS 5319 - 400	400	423	128	288	160	288
HS 5319 - 450	450	473	128	320	160	320
HS 5319 - 500	500	523	160	384	192	384
HS 5319 - 550	550	573	160	416	192	416
HS 5319 - 600	600	623	192	480	256	480
HS 5319 - 650	650	673	224	544	256	544
HS 5319 - 700	700	723	256	576	288	576
HS 5319 - 750	750	773	288	640	320	640
HS 5319 - 800	800	823	320	704	352	704
HS 5319 - 850	850	873	320	704	352	704
HS 5319 - 900	900	923	352	736	384	736
HS 5319 - 950	950	973	352	736	384	736



		MATERIAL	STEEL	APPROVED.	DATE	ITEM NO.	5319	GENERAL TOLERANCE	ISO 2768-m	
b	2012.JUN.29	UNIT	MM	CHECKED.		DRAWING NO.				
a	2012.FEB.10	SCALE	1: 4	DRAWN.	2012.JUN.29	REMARKS		Teleskopschienen-Shop Handelsvertretung Blömeling Telefon: (+49) 02234 - 93 69 199 Fax: 02234 - 65 99 03 Internet: www.teleskopschienen-shop.de Email: info@teleskopschienen-shop.de		
LTR.	DATE	DESCRIPTION	SLIDE	FILE:		TW028				
REVISIONS										

Item No.	Length A	Travel B	C	D	E	F	G	H	I	J	K	L
HS 5319-1000	1000	1023	160	384	640	-	864	192	384	672	-	864
HS 5319-1100	1100	1123	192	448	704	-	928	192	448	704	-	928
HS 5319-1200	1200	1223	224	580	836	-	1092	224	580	836	-	1092
HS 5319-1250	1250	1273	224	512	832	-	1120	256	512	864	-	1120
HS 5319-1500	1500	1523	288	640	736	1024	1376	320	640	736	1056	1376



		MATERIAL	STEEL	APPROVED.	DATE	ITEM NO.	5319	GENERAL TOLERANCE	ISO 2768-m	
b	2012.JUN.29	UNIT	MM	CHECKED.		DRAWING NO.				
a	2012.FEB.10	SCALE	1:4	DRAWN.	2012.JUN.29	REMARKS		Teleskopschienen-Shop		
LTR.	DATE	DESCRIPTION	SLIDE	FILE:		TWO28		Handelsvertretung Blömeling		
REVISIONS								Telefon: (+49) 02234 - 93 69 199 Fax: 02234 - 65 99 03 Internet: www.teleskopschienen-shop.de Email: info@teleskopschienen-shop.de		